



# GAT MONTHLY MEMBERSHIP PROGRESS REPORT

Results as of: 4/30/2022

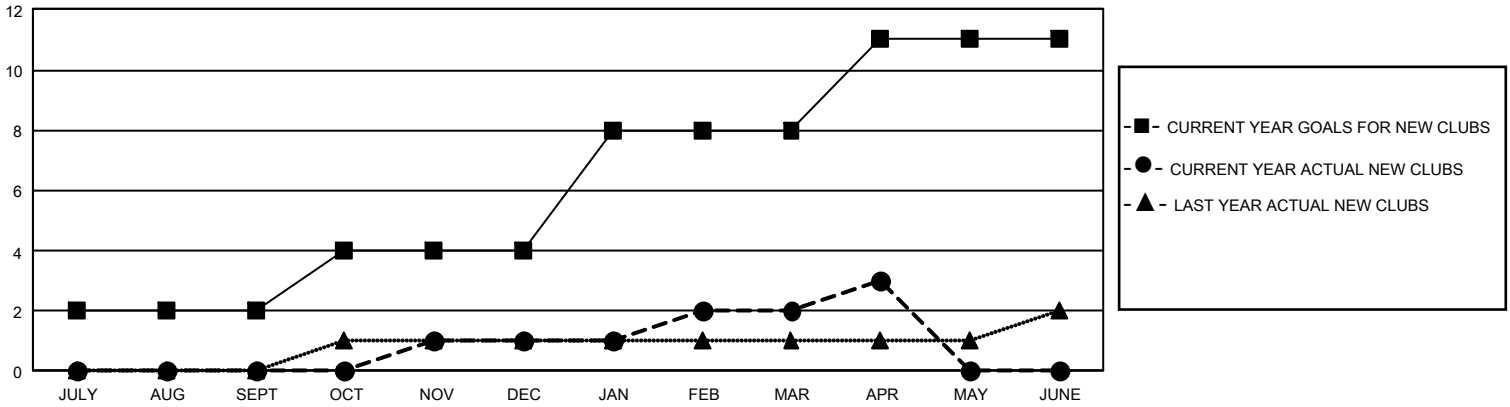
## GMT Constitutional Area 5 - J, Group J

REPORT DOES NOT INCLUDE CLUBS IN UNDISTRICTED AREAS.

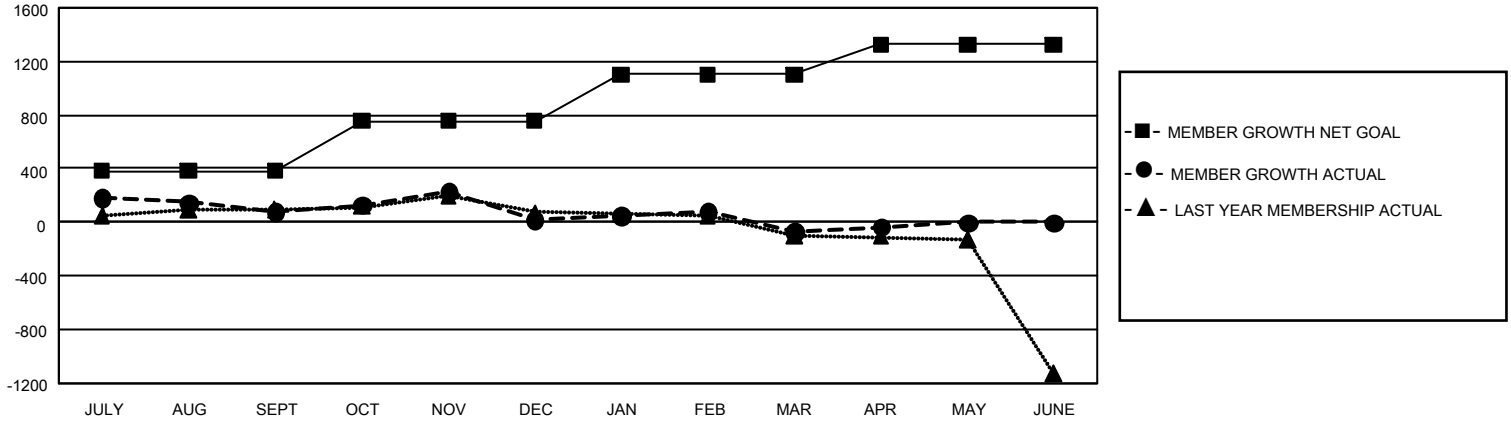
Clubs			
RESULTS FOR 2021-2022			
QUARTER	NEW CLUB GOAL	NEW CLUBS	DROPPED CLUBS
JULY/AUG/SEPT	6	0	0
OCT/NOV/DEC	6	1	2
JAN/FEB/MAR	12	1	2
APR/MAY/JUNE	9	1	1

Members			
RESULTS FOR 2021-2022			
QUARTER	MEMBER GROWTH NET GOAL	MEMBER GROWTH ACTUAL	DROPPED MEMBERS ACTUAL (including transfers)
JULY/AUG/SEPT	381	583	463
OCT/NOV/DEC	375	460	508
JAN/FEB/MAR	345	394	459
APR/MAY/JUNE	225	212	171

GOALS AND ACTUAL NEW CLUBS CUMULATIVE



GOALS AND ACTUAL MEMBERS CUMULATIVE



<b>DROPPED CLUBS: 5</b>  <b>DROPPED MEMBERS</b> DECEASED 194 CLUB CANCELLED 18 OTHER 1,389 <b>TOTAL 1,601</b>	524 CLUBS OF 772 ADDED 1 OR MORE NEW MEMBERS	<b>GENDER DISTRIBUTION</b> MALE 21,828 (78.84%) FEMALE 5,856 (21.15%) NON BINARY 0 (0.00%) PREFER NOT TO ANSWER 4 (0.01%)
	<a href="#">CLICK HERE FOR CUMULATIVE MEMBERSHIP DATA</a>	TOTAL FAMILY UNIT MEMBERS 7,494 FAMILY MEMBERS PAYING HALF DUES 4,104